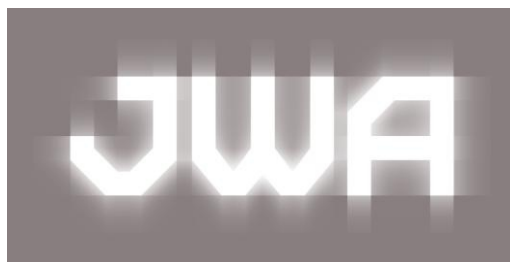
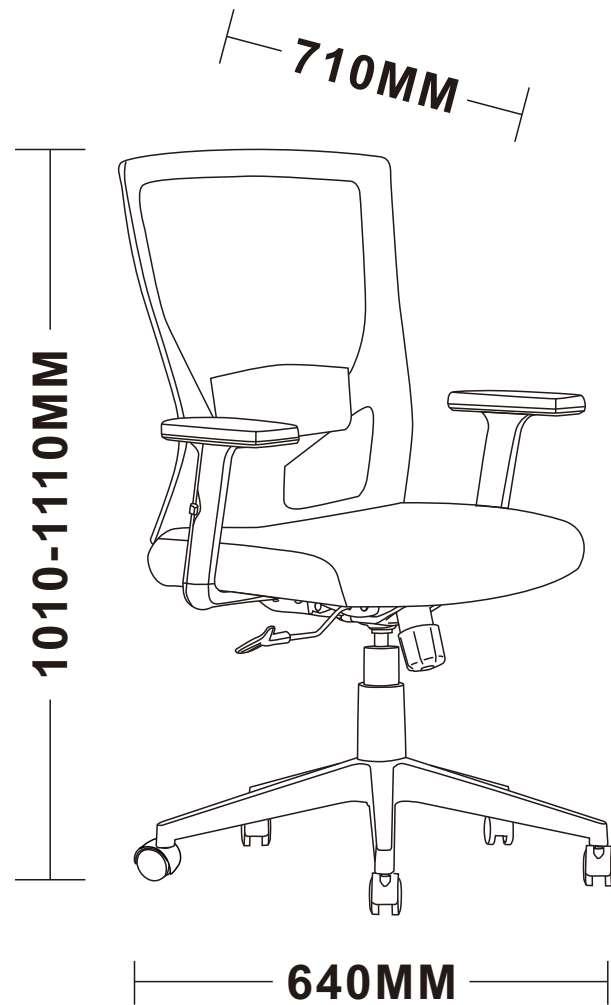


# ASSEMBLY INSTRUCTION

MARTIN

Black Office Chair

ITEM CODE 75143

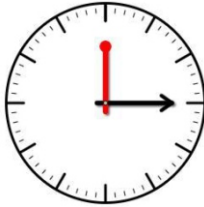

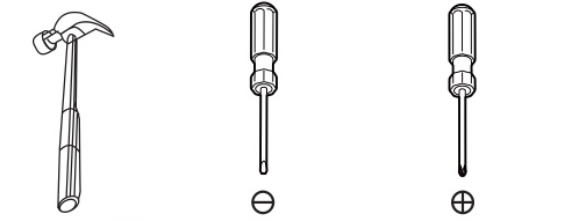


Imported by JWA Furniture Pty Ltd, Qld, Brisbane Australia.  
For any assistance with assembly or for missing parts please refer to your receipt


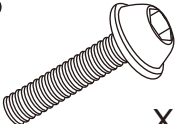
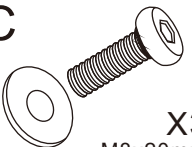
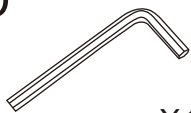
# PRE-ASSEMBLY PREPARATION

## Before you start:

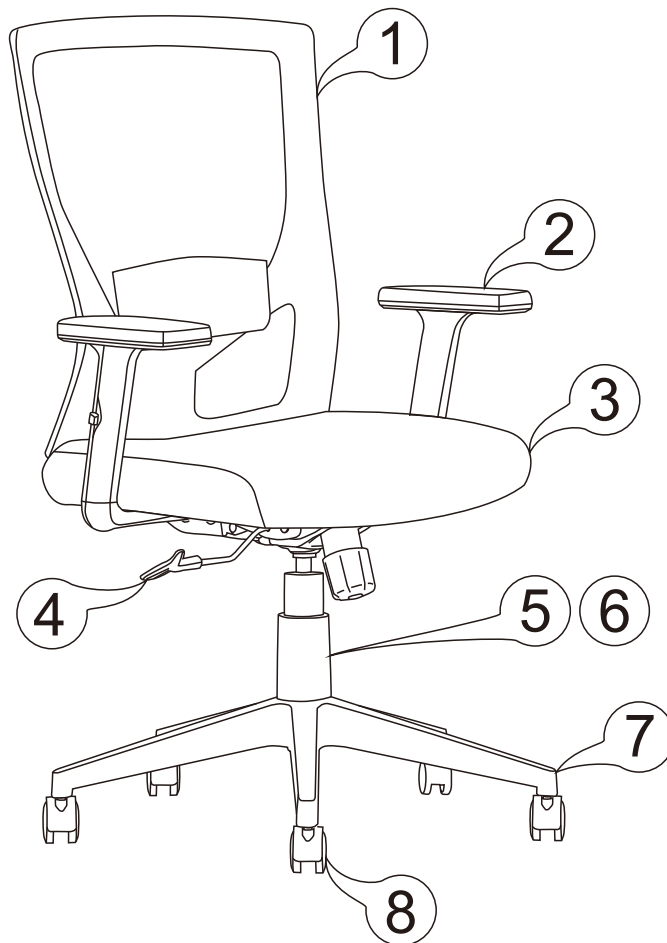
1. Choose a clean, level, spacious assembly area. Avoid hard surfaces that may damage the product
2. Take care when lifting. Product should be assembled as near as possible to the point of use
3. Ensure that you have all required contents for complete assembly
4. Always read the assembly instructions carefully before beginning assembly.
5. Keep all hardware parts and packaging out of reach of small children.
6. Do not over tighten the screws and bolts as this may damage the threads
7. Assembly is to be carried out by a competent adult(s) ONLY
8. During assembly, children should be kept away from the product due to possible risk to injury.
9. Do not use this item if any components are missing or damaged.
10. Please keep the instructions for future reference.

		
Allow 15 min	For 1 person	Additional tools required

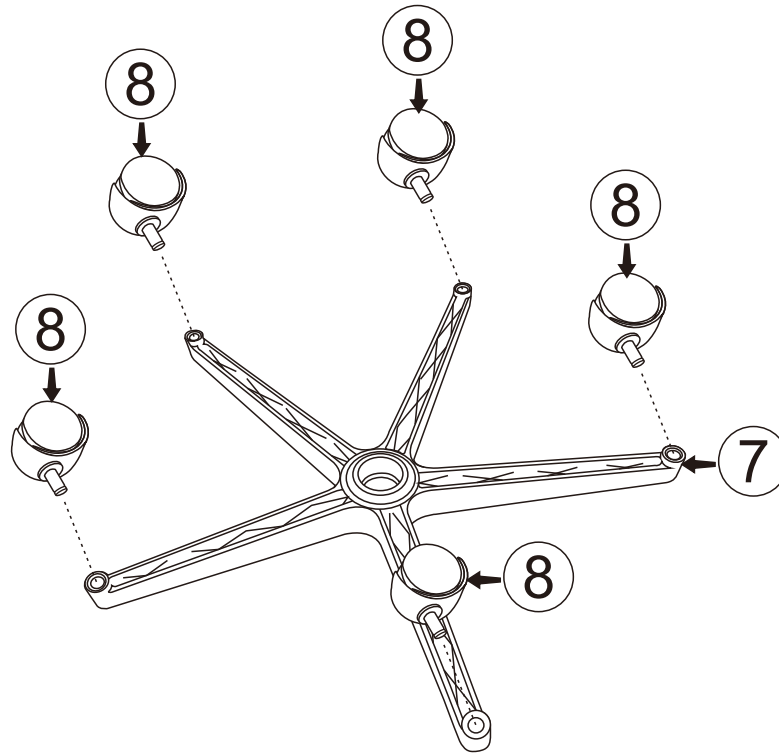
# PARTS LIST

<p><b>A</b></p>  <p><b>X4</b> M6x16mm</p>	<p><b>B</b></p>  <p><b>X6</b> M6x25mm</p>	<p><b>C</b></p>  <p><b>X3</b> M8x20mm Φ17xΦ8.5x2mm</p>	<p><b>D</b></p>  <p><b>X1</b></p>
--	--	--	--

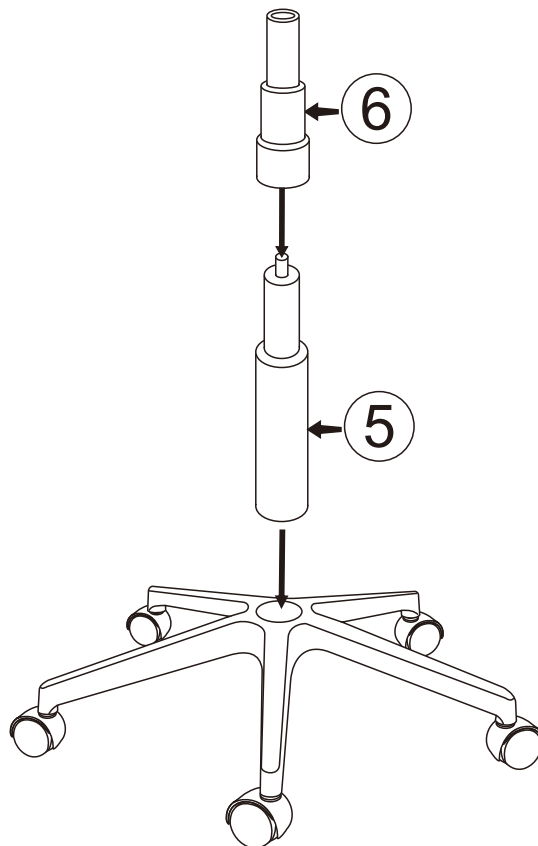
1	BACK	5	GAS LIFT
2	ARMREST (L)&(R)	6	GAS LIFT COVER
3	SEAT	7	BASE
4	MECHANISM	8	CASTOR



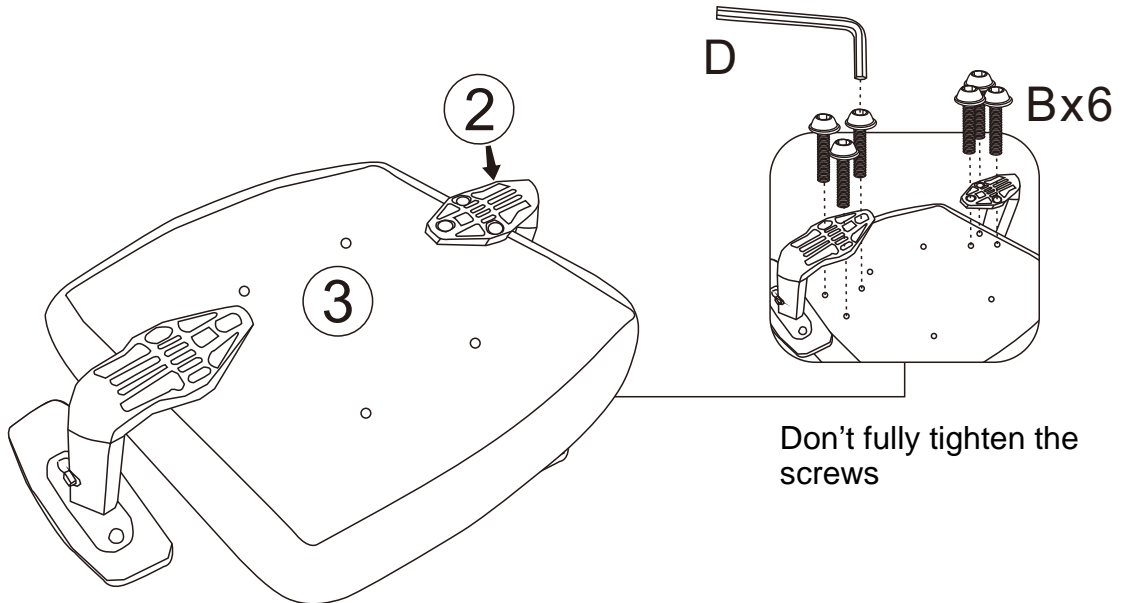
**STEP 1: Insert Castor (8) to Base (7).**



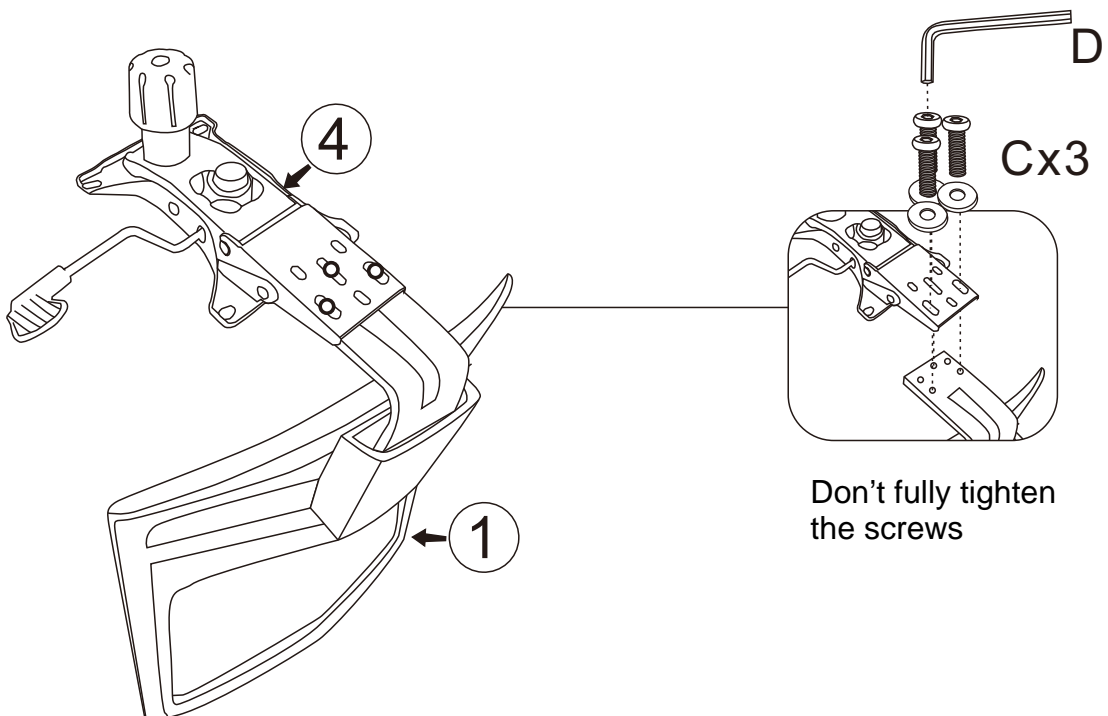
**STEP 2: Attach Gas lift (5) to Base (7), and attach Gas lift cover (6) to Gas lift (5).**



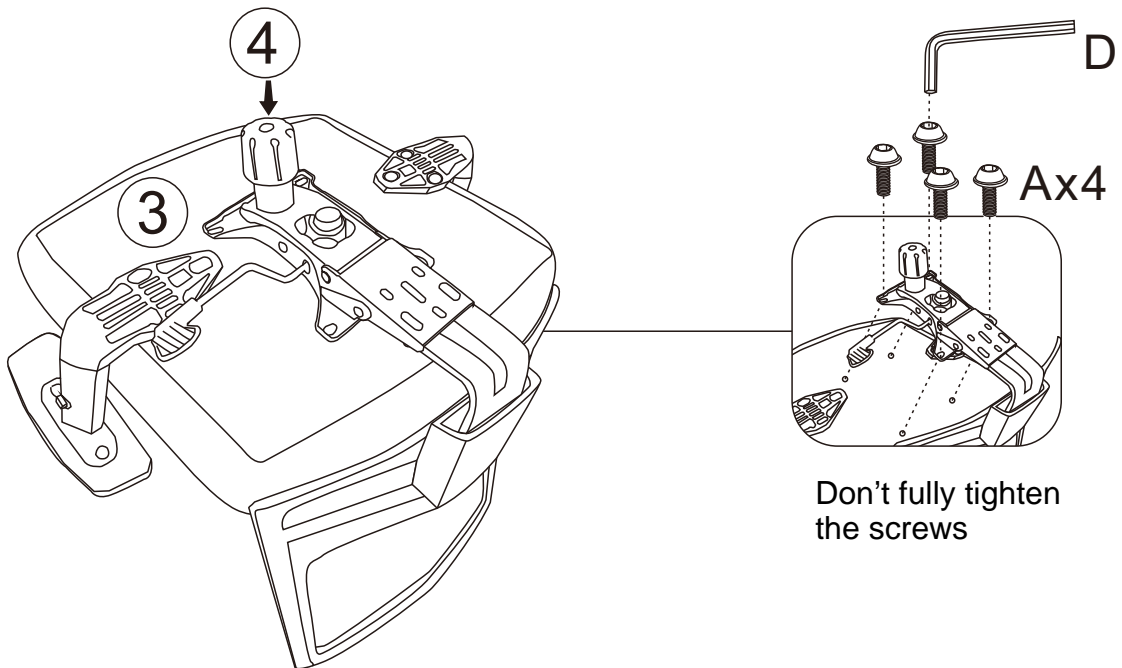
**STEP 3: Attach Armrest (2) to Seat (3) with Part (B) using Allen key (D).**



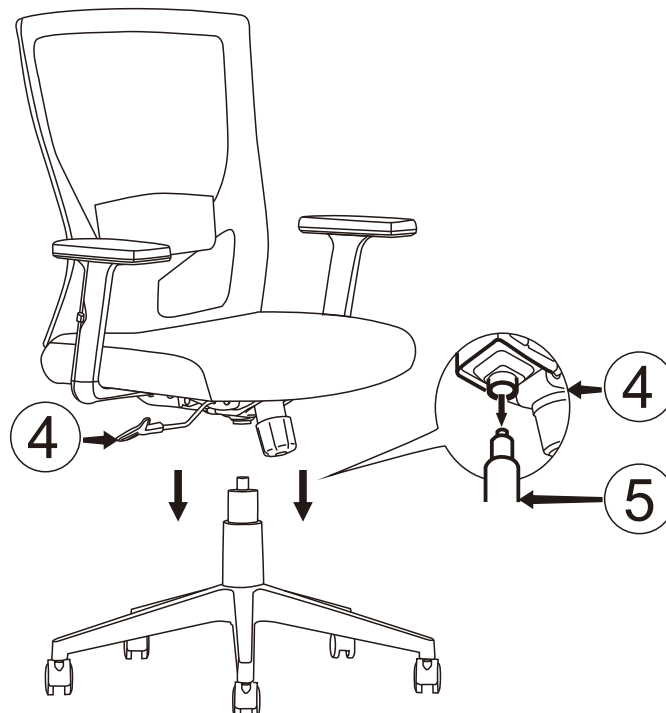
**STEP 4: Attach Mechanism (4) to Back (1) with Part (C) using Allen key (D).**



**STEP 5: Attach Mechanism (4) to Seat (3) with Part (A) using Allen key (D).**



**STEP 6: Turn chair over, insert Mechanism (4) into Gas lift (5).**



**STEP 7: Assembly is complete.**



# **CARE AND MAINTENANCE**

## **OFFICE CHAIR**

### **DO NOT REMOVE THIS LABEL**

- DO NOT STAND ON THIS CHAIR-DO NOT USE THIS CHAIR AS STEP LADDER.
- USE THIS PRODUCT ONLY FOR SEATING ONE PERSON AT A TIME.
- DO NOT USE THIS CHAIR UNLESS ALL BOLTS, SCREWS AND KNOBS ARE FIRMLY SECURED.
- AT LEAST EVERY 4 MONTHS, CHECK ALL BOLTS, SCREWS AND KNOBS TO BE SURE THEY ARE TIGHT.
- IF PARTS ARE MISSING, BROKEN, DAMAGED OR WORN, STOP USE THE PRODUCT UNTIL REPAIRS ARE MADE. USING FACTORY AUTHORIZED PARTS.
- FAILURE TO FOLLOW THESE WARNINGS COULD RESULT IN SERIOUS INJURY.